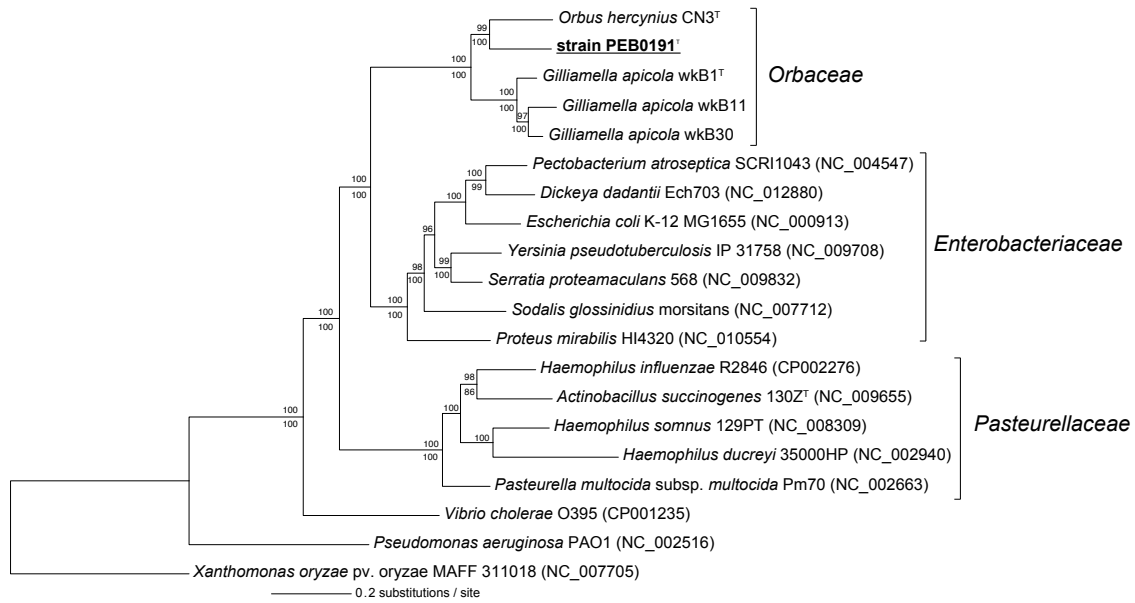


1

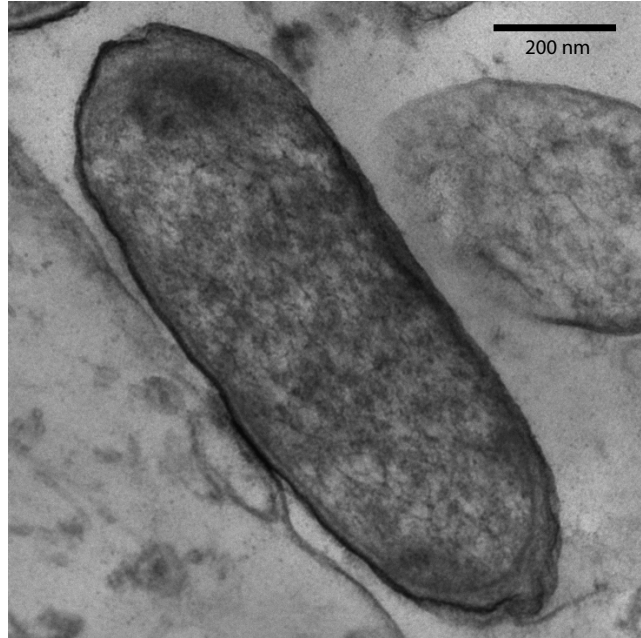


2
3

4 **Figure S1.** Maximum likelihood phylogeny based on the concatenated protein
5 sequence alignments of eight single-copy genes. The alignment (4,770 sites)
6 was generated with MUSCLE and the tree was inferred with PhyML as
7 implemented in Geneious v.5.6.3 using the model of evolution after Si Quang Le
8 and Olivier Gascuel (LG) with proportion of invariable sites (+I), Gamma
9 distribution (+G), and observed amino acid frequency (+F). The model was
10 selected with jModeltest 0.1.1. Numbers above branches indicate bootstrap
11 values for 100 replicates. Numbers below branches indicate bootstrap values
12 (1000 replicates) for a neighbor-joining analysis conducted on the same
13 alignment with MEGA5 using the Maximum Composite Likelihood method for
14 computing evolutionary distances. Accession numbers for protein-coding genes
15 of *G. apicola* strains wkB1^T, wkB11, wkB30, and strain PEB0191^T used for this
16 analysis are X878307 to X878338.

17

1
2
3
4
5
6
7
8
9
10



11 **Figure S2.** Transmission electron micrograph of strain PEB0191^T obtained with a
12 Zeiss EM-900 TEM. Scale bar = 200 nm. Sample embedding, sectioning, and
13 staining were performed as described by Kwong & Moran (2012).
14

1 **Table S1.** Susceptibility of strain PEB0191^T to different antibiotics. Experiments
 2 were performed in duplicate. Antibiotics are indicated in bold when PEB0191^T
 3 showed resistance.

4

Antibiotics ^a	PEB0191			<i>E. coli</i> K12 MG1655		
	sensitive	clearance zone ^b	MIC (ug/ml) ^c	sensitive	clearance zone ^b	MIC (ug/ml) ^c
Kanamycin (30 ug)	+	25	nd	+	10	nd
Streptomycin (10 ug)	-	0	>10	+	85	<10
Gentamycin (25 ug)	+	45	nd	+	115	nd
Carbenicillin (30 ug)	-	40^d	>20	+	65	<10
Ampicillin (20 ug)	-	0	>20	+	30	<10
Spectinomycin (50 ug)	+	20	nd	+	80	nd
Nalidixic acid (30 ug)	+	20	nd	+	40	nd
Ceftazidime (25 ug)	-	0	<10	+	105	<10
Rifampicin (30 ug)	+	85	nd	+	15	nd
Tylosin (30 ug)	+	25	nd	-	0	nd
Chloramphenicol (30 ug)	+	115	nd	+	100	nd
Oxytetracycline (30 ug)	-	5^d	>50	+	60	<10

5

6 ^aExperiments were performed in duplicate, except for *E. coli* tested on ampicillin.

7 Amount of antibiotic spotted onto filter disk (radius of 3 mm) are indicated in ug.

8 ^bAverage width of clearance zone around filter disk is given in mm.

9 ^cMinimal inhibitory concentrations (MICs) were only determined, if there was
 10 evidence for resistance from the disc diffusion assay. For MICs, strains were
 11 tested by plating on sheep-blood supplemented TSA with the following antibiotic
 12 concentrations: 10 µg/ml, 20 µg/ml, 30 µg/ml, 40 µg/ml, and 50 µg/ml.

13 ^dzone with reduced growth was observed.